



*Makeup Lesson
Beauty Book*

by: Angela Mobile Makeup

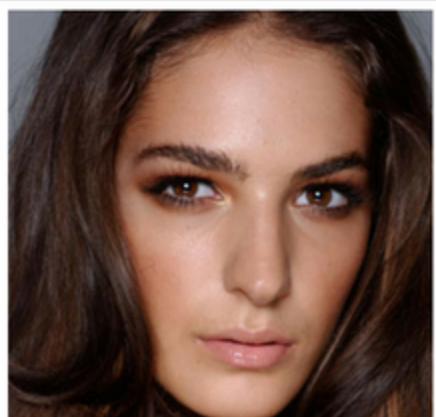
Skin Tones

Lipstick



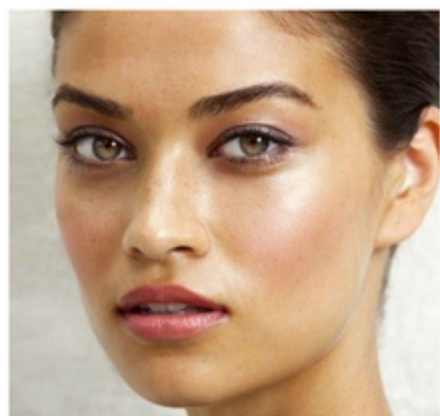
Fair

glossy transparent pinks
light peach
light pink/nude



Medium

medium pinks
medium apricots
tangy peach
light mocha
delicate red
coral



Olive

deep rose
berry
dark apricots
coral
peach
soft pink



Ebony

deep brownish red
deep berry
deep fuchsia



Eye Color

Liner and Shadow



Blue

warm brown

rich warm brown

taupe

warm taupes

plum

soft peaches



Green

red - brown

golden browns

warm taupe

deep purples

purple

soft violets



Brown

rich brown

blue

golden brown

green

light mahogany

purple



Grey

charcoal

purple

deep brown

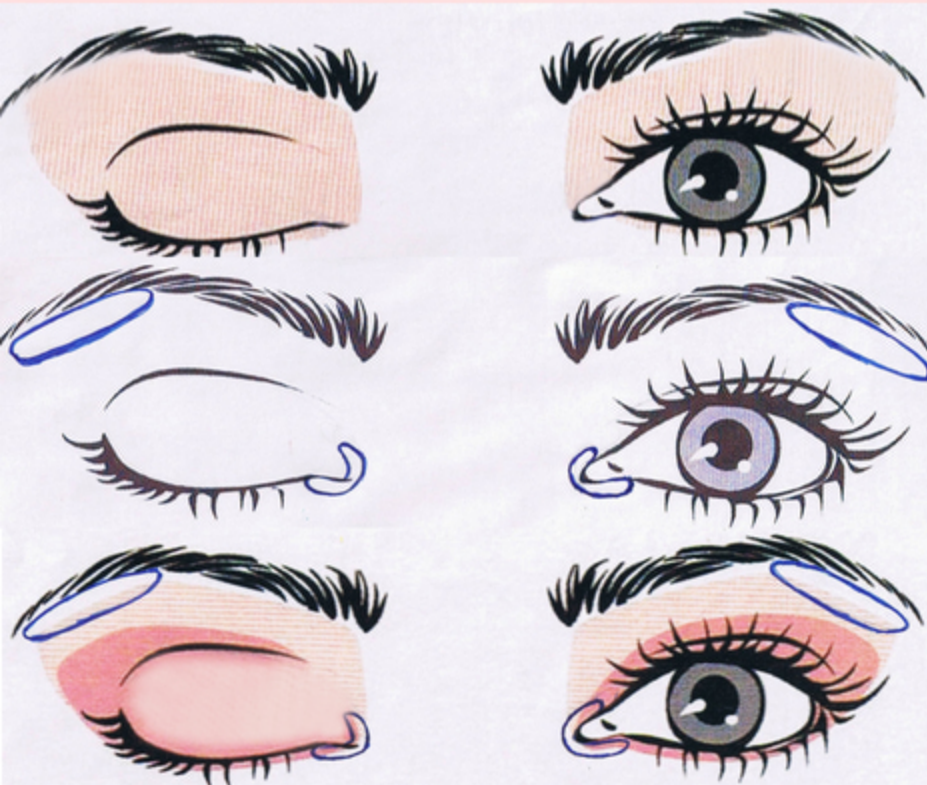
plum

cool brown

cool bronze



EYE SHADOW APPLICATION



Eye Primer: Apply eye primer from your lash-line all the way up to your brow bone

Highlight Shade: If applying a highlight, the placement is located under the brow bone and inner corner of the eye

Crease Shades: Blend shadows into the crease starting from the lightest shade to the darkest and moving outward. Sweep the shadow under the lower lash as well

ACHIEVING THE PERFECT BROW



1. Hold the handle of a makeup brush vertically against the side of your nose, noticing where it meets your brow. This is where your brow should begin



2. Hold the handle against your nose and move it diagonally across the outer half of the iris of your eye. Notice where the handle meets your brow. This is the best place for the peak of your arch



3. Again, place the handle against your nostril and extend it diagonally to the outer corner of your eye. Where it meets the brow is the best place for your brow to end



QUICK AND SIMPLE 5 MINUTE MAKEUP

FOR THOSE DAYS WHERE YOU WANT A POLISHED LOOK BUT WITH FEWER PRODUCTS AND THE LEAST AMOUNT OF TIME IN FRONT OF THE MIRROR.



1. Apply a moisturizer with sunscreen and a light foundation. If you desire something lighter than foundation, opt for a tinted moisturizer.
2. Set foundation with a dusting of translucent powder.
3. Brush eyebrows and fill in sparse areas with brow powder for a natural groomed look. Set brows with clear mascara/brow gel to keep them in place all day.
4. Dust a neutral shadow into the crease of your eyelids and line your lash line with dark brown or black eye shadow using a small angle brush.
5. Apply mascara.
6. Apply blush to the apple of your cheeks.
7. Apply lip gloss to lips.

GLAM MAKEUP

FOR THOSE ROMANTIC EVENINGS OUT OR SPECIAL OCCASIONS WHEN YOU WANT TO TAKE YOUR LOOK TO THE NEXT STEP.



1. Apply moisturizer and eye cream (eye cream helps concealer go on smoothly)
2. Tip: Start with the eyes first to avoid excess clean up on your face from fallen eye shadow.
3. Apply eye shadow primer to eyes (below eyebrow all the way down to lash line)
4. Apply a light transition shade in the crease and increase the intensity with darker shades working your way outwards.
5. Apply Primer and foundation. Since it's evening you may choose one with more coverage. This will give skin a flawless look.
6. Apply concealer where needed to cover imperfections (be sure to set concealer with powder afterward to avoid creasing) also use this time to set your makeup using a large fluffy brush.
7. Define brows and fill in sparse areas using your favorite eyebrow product. Coat with clear brow gel.
8. Apply mascara to lengthen your lashes and follow with false lashes for extra glam (optional)
9. For evening concentrate on making your cheekbones stand out by using bronzer or contour powder. Apply blush to the apple of your cheeks working upwards and add highlighter to catch the light.
10. Line your lips with lip liner in a similar color to your lipstick and add gloss.

HOW LONG SHOULD I KEEP MY MAKEUP?



Eye Lash Curler: Shelf life: Unlimited

It's best to replace the rubber if it is cracked or looks old so there is no damage to your lashes. Clean your eyelash curler about once a week using 99% alcohol to kill any bacteria.



Lipstick: Shelf life: 3-4 years

When a lipstick starts smelling waxy like a crayon it's time to toss it.



Makeup Brushes: Shelf life: Unlimited

If you invest in good quality brushes and keep them in great condition cleaning them regularly, they can last a lifetime.



Mascara: Shelf life: 3-6 months

Mascara should be the most disposable of your cosmetics. It is prey to bacteria buildup and will start to dry out if you keep it for too long.



Pressed Cosmetics: Shelf life: 3 years

Eye shadows, blush, and powder. If these products have any creams or oils in them they will start to dry out and lose their silkiness and become hard to blend. There is also a chance of bacteria buildup on old pressed powder cosmetics.



Sunscreen: Shelf life: 1 season

Some experts say two years but after a season of lying in direct sunlight, the chemical components will start to break down. It's smart to start the season with fresh product.

ANGELA MOBILE MAKEUP

MAKEUP - HAIR - ORGANIC SPRAY TANS



ABOUT ME

Certified Makeup Artist and licensed hair stylist with 14+ years experience in tv, film, print, bridal, special events and more. I've had the opportunity to work with beautiful brides, top directors, and A-list celebrities. My passion, love for artistry, education, and experience has given me the ability to create an array of different looks for any special occasion or event.

* Licensed by the California Board of Barbering and Cosmetology / certified since 2004

*Diploma from Makeup Designory (MUD) for completion of the Fashion Stylist Program (Beauty Makeup, Studio Hair Styling and Wardrobe Styling) in addition to their Character FX Artistry Course / certified since 2005

STAY IN TOUCH FOR FUN STUFF!

INSTAGRAM

@ANGELAMOBILEMAKEUP

makeup swatches, new makeup releases, beauty looks and discount! I post updates on insta-story when there are promotions on my services



BLOG

BEAUTY-TRAVEL-LIFESTYLE

www.angelamobilemakeup.com/asseenbyme

FACEBOOK

@ANGELAMOBILEMAKEUP

the same content as Instagram except you may miss out on promotions, so why not just follow on both!

About my blog

AS SEEN BY ME

I'm a solo female traveler conquering one country and adventure at a time. People often see things as black and white, there's the "Girly Girl" and there's the "Tom Boy". Through my blog, I look forward to blurring the line and showing that a woman can love her lip gloss and Louboutin shoes but she can also backpack through Europe on her own, stay in a tree house in the middle of the rainforest, cross Europe's highest suspension bridge in the Swiss Alps all while being confident in her bare makeup-free skin. My yearly month-long trips began when I decided that I wanted to live an adventurous life doing things that set my heart on fire.

Of course, I share product reviews, makeup tutorials and talk about all things beauty!

Join me for an adventure and prepare to experience things As Seen By Me